

Buy it. Own it.  
No Lease. No License.  
Ever.



# Digi-Tally™

[www.digi-tally.com](http://www.digi-tally.com)

## Laser Pipe Tally System

DIGI-TALLY ADVANCED LASER PIPE TALLY SYSTEM FOR THE RIGSITE



Digi-Tally LPT-301 rigsite version—the system that created laser pipe tally

- Reliable non-contact operation
- Repeatable measurements
- Eliminates recording and transcription errors
- Ultra-fast measurements
- Measurement accuracy to 0.062 inch
- Read pipe length over conventional stripping
- Automatic report generation on command
- Auto check routine detects length anomalies
- Multiple output formats/methods
- Instantly create spreadsheet compatible reports

The complete battery operated mobile laser pipe tally system



**Contact Digi-Tally for more information:**

Phone: 432-218-4517

www.digi-tally.com

info@digi-tally.com

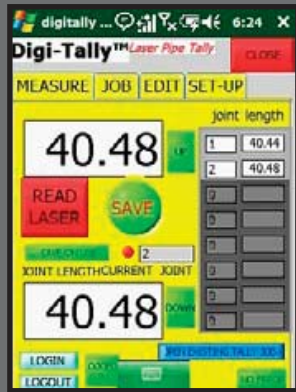
**Manufactured in USA**

## Digi-Tally LPT-301 rigsite version—the system that created laser pipe tally

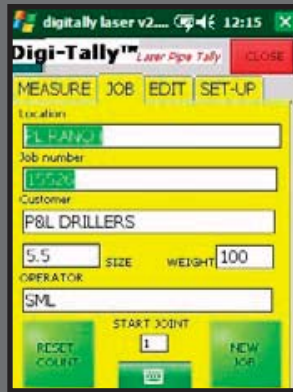
- **Accurate** laser measurements ensure confidence in your reports
- **Rugged** housing—this battery operated system is built for the field
- **Seamless** data export via USB, WiFi, Bluetooth, and more—hand over reports instantly



Digi-Tally Controller



Measurement screen



Job info screen



Job file review screen



Auto check review screen

## Technical specifications

### LPT-301 laser and housing

- Laser Measuring range: 2 inch to 492 feet
- Class II visible red laser for eye safe operation
- Approximate weight: 4.5 pounds
- Accuracy: 0.062 inch (0.005 feet)
- Resolution: 0.004 inch (< 0.01 feet)
- Lithium ion cell battery
  - 12 VDC with wall AC charger
  - 4 hours estimated battery life
- Construction materials
  - Main housing: Aluminum, powder coated
  - Pipe attachments: Stainless Steel
- Operating temperature: 14° F to +122° F\*

\*Extreme cold weather heater option available for colder climates

### Rugged field controller

- IP67 rugged waterproof and dustproof housing
- Operating temperature: -22 ° F to 140 ° F
- Lithium ion cell battery
  - 12 VDC with wall AC charger
  - 8–12 hours estimated battery life
- Data interfaces: Wi-Fi, Bluetooth, USB 2.0, GSM (GPRS)
- High contrast VGA color display
  - Touch screen interface
  - Active viewing area 3.5"
- Size: 7" long x 3.8" wide x 1.5" thk
- Weight: 17 oz. with battery
- Output: Tab delimited file readable in Excel & Word

## Contents of a standard Digi-Tally model LPT-301 kit:

- (1) Laser Pipe Tally measuring head
- (1) Custom carrying case
- (1) Alignment support
- (1) Adjustable thread locator
- (2) Rechargeable Lithium ion batteries
- (1) AC charger
- (1) Target plate
- (1) Sun Shroud
- (1) Mobile field controller
  - AC battery charger
  - USB PC Sync cable (Windows XP, 7 supported)

**Digi-Tally system and components protected by patent**

*Digi-Tally, Inc. reserves the right to change specifications at any time without notice*